

9621 County Road 328 Lot 21, Blumenau #1



On top of the world views greet you from these acres in the sky. Everywhere you turn, the mountains welcome you! Your future home will be a delight to the eye as every room will be a room with a view. The access is easy off of a county maintained road which connects you with State Highway 96 and State Highway 69. Colorado Springs is approximately 70 miles away and Pueblo just an hour drive. Blumenau subdivision HOA allows one to two horses per 2 acres of land with a water augmentation plan in place. Don't delay! Drive down today and claim these acres that are easy on the eye and pocketbook.



Offered By:

Jennifer Murphy
Broker Associate



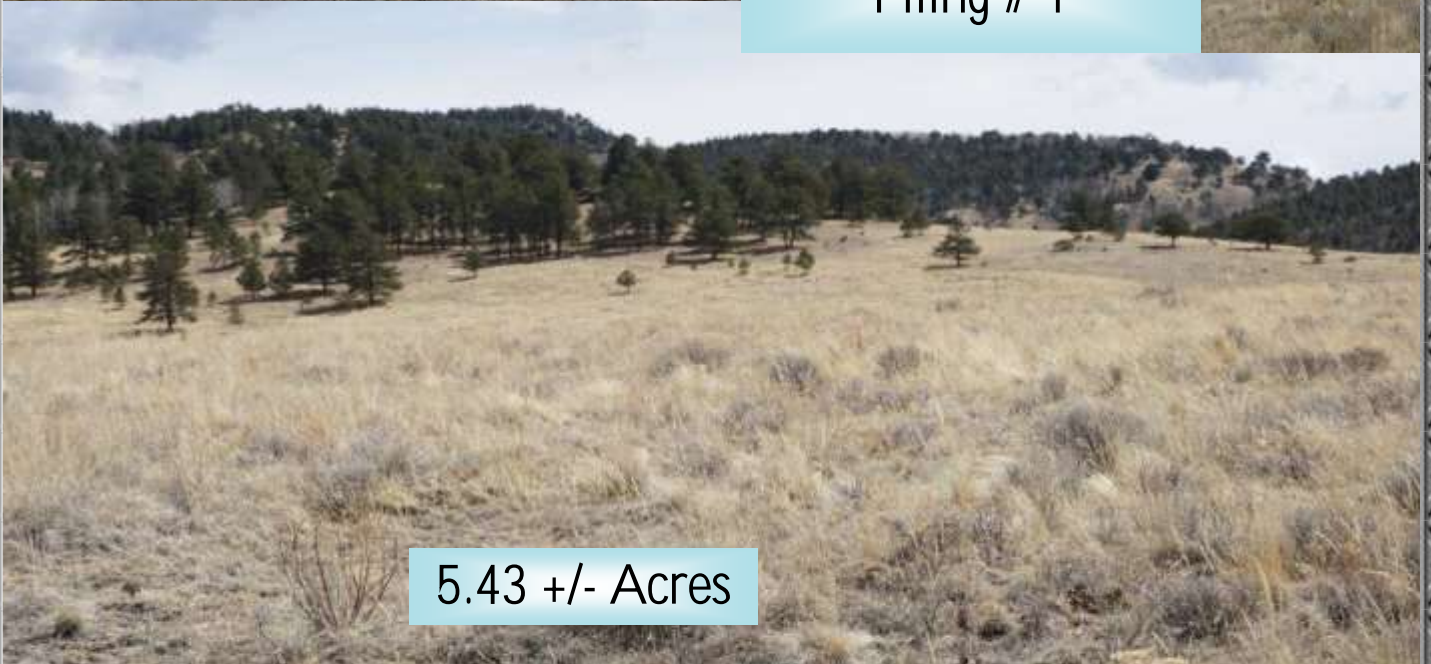
CUSTER COUNTY REALTY, INC.
902 MAIN STREET, WESTCLIFFE, COLORADO 81252
PH: 719-783-9221 - Cell: 719-429-3020
www.custerrealty.com — jen@custerrealty.com



All information is from sources deemed reliable but is not guaranteed by Seller, Agent or Agency. Offering is subject to error, omissions, prior sale, change, withdrawal without notice, and approval of purchase by the owner. We urge independent verification of each and every item submitted, to the satisfaction of any prospective Buyer. Although care was exercised in obtaining and verifying this material, parties reviewing it should seek advice from tax and/or legal counsel. Well information, if any, is from the well log for each individual property.



Lot 21 Blumenau
Filing # 1



5.43 +/- Acres

Offered For: \$19,900

